



	Electric Blue med	DMC 996
	Electric Blue dk	DMC 995
	Chartreuse bright	DMC 704
	Christmas Green lt	DMC 702
	Topaz lt	DMC 726
	Tan med lt	DMC 437
	White	BLANC
	Pearl Grey	DMC 415
	Black	DMC 310
	Tan med	DMC 436
	Tangerine med	DMC 741

Backstitch in:

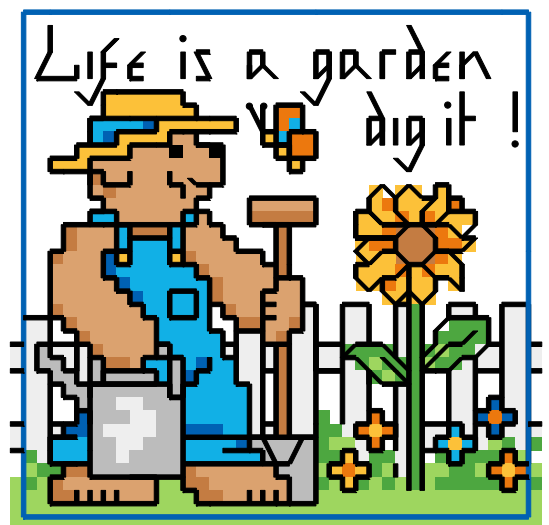
	Electric Blue dk	995
	Black	310

French Knots in:

	Black	310
--	-------	-----

Stitch Count 40 x 39

Design Area 2 7/8 x 2 3/4 inches at 14ct



Copyright Joanne Sanderson 2008.  
 More original cross stitch patterns are  
 available at [www.joannesanderson.com](http://www.joannesanderson.com)  
 or contact Joanne at -  
[info@joannesanderson.com](mailto:info@joannesanderson.com)